

TACTICAL BELT SERIES

ABOUT US

Fairyland Group is one of the global recognized product research and development enterprises specializing in the innovation, production, and distribution of premium hardware components and advanced webbing, belts and suspenders solutions.

Our core offerings encompass premium hardware accessories — including precision-crafted buckles, clasps and fasteners — as well as advanced webbing products designed for applications in fashion, outdoor gear, automotive manufacturing, luggage, and industrial equipment.

Our vertically integrated supply chain and state-of-the-art facilities ensure seamless customization, rapid prototyping, and scalable production to meet the evolving needs of clients worldwide. By fostering collaborative partnerships and maintaining a customer-first ethos, Fairyland Group empowers brands to achieve competitive differentiation. With a global network of subsidiaries and a forward-thinking team, we continue to redefine industry benchmarks while supporting clients at every stage of their growth journey.

Discover how Fairyland's innovative spirit and technical prowess can transform your next project!



FEATURES

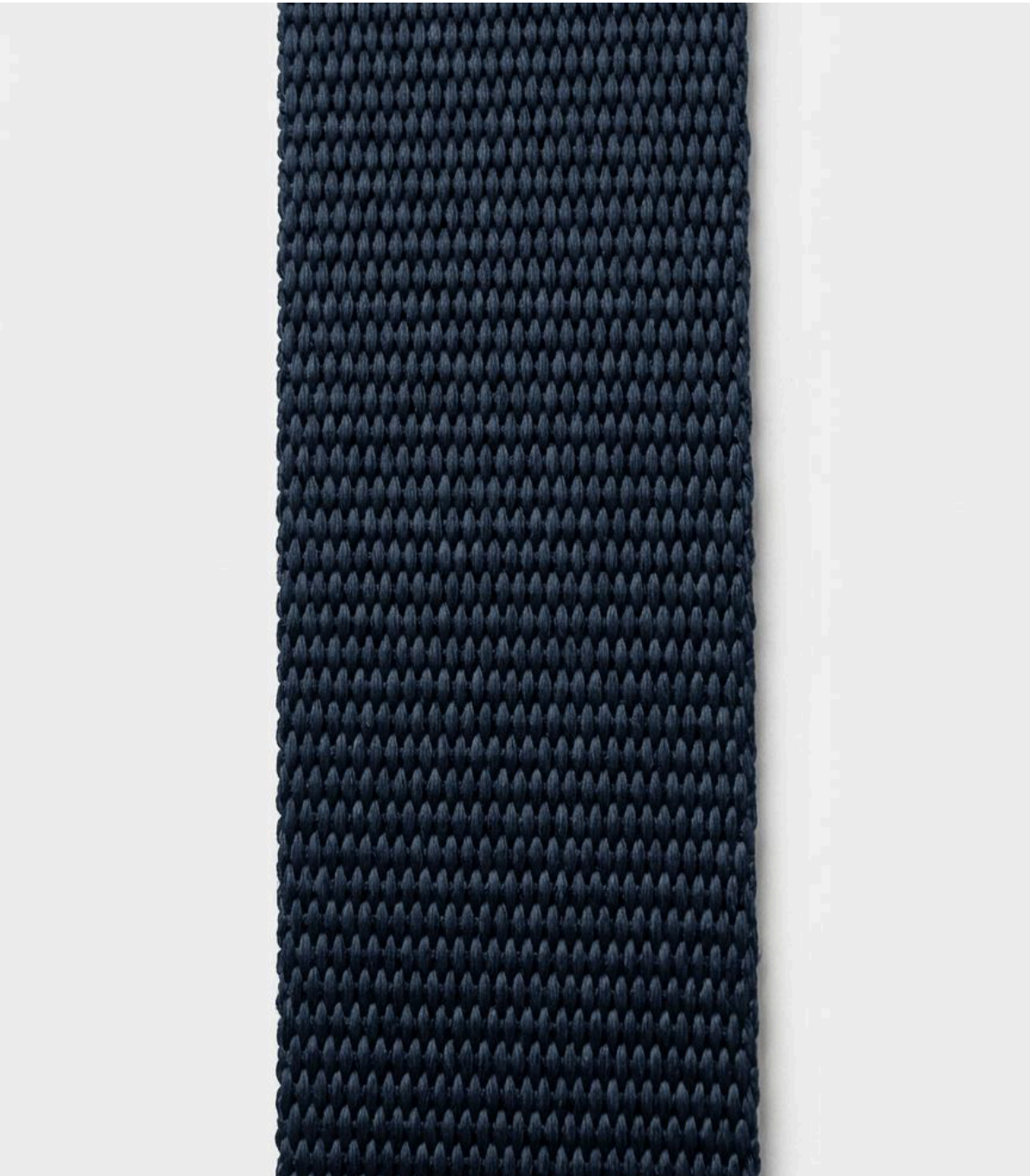
- 1. Ergonomically designed belt
- 2. Aviation aluminum buckle.
Tensile strength above 1000 kg when belt is fastened.





FEATURES

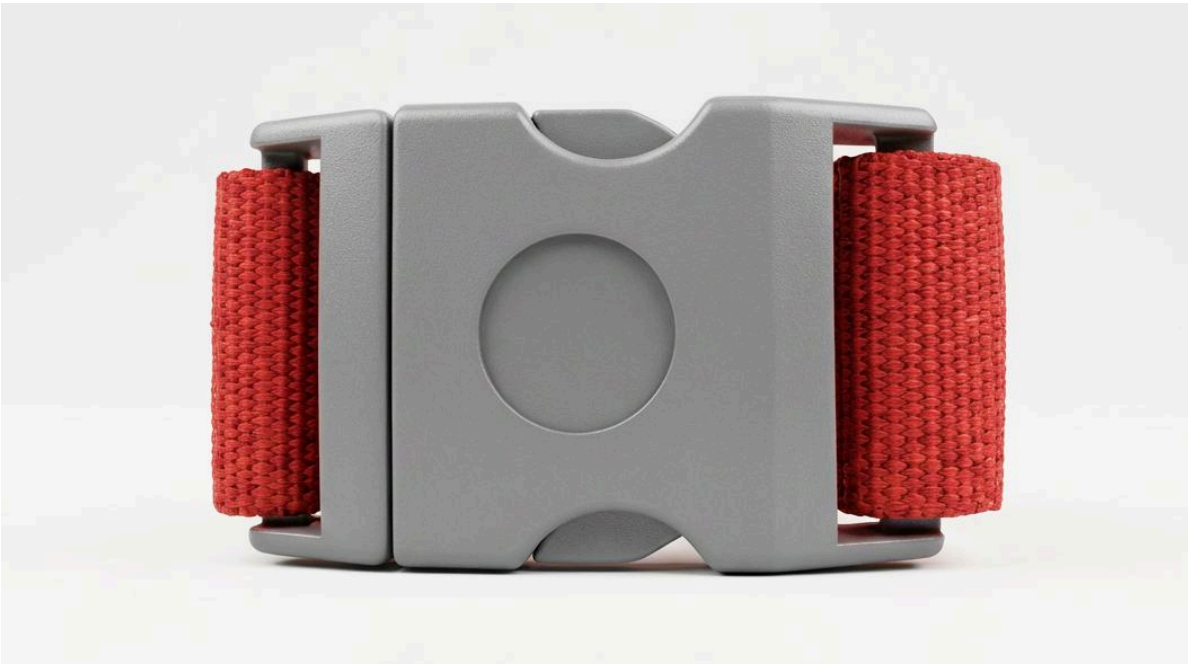
- 1. Zinc alloy buckle
- 2. 100% nylon webbing





FEATURES

- 1. High strength aviation aluminum buckle
- 2. Ergonomically designed belt





FEATURES

- 1. Cordura material
- 2. Molle structure, easy to attach bags, gear, hands free



FEATURES

- 1. Easy to operate and broad compatibility
- 2. Offers great comfort by reducing waist pressure





FEATURES

1. Nylon webbing offers high wear-resistance and is comfortable to the touch
2. Molle structure offers flexible options for multiple applications





FEATURES

1. Nylon webbing offers high wear-resistance and is comfortable to the touch.
2. Molle structure offers flexible options for multiple applications





FEATURES

- 1. Elastic webbing
- 2. Zinc alloy buckle



WEBBING

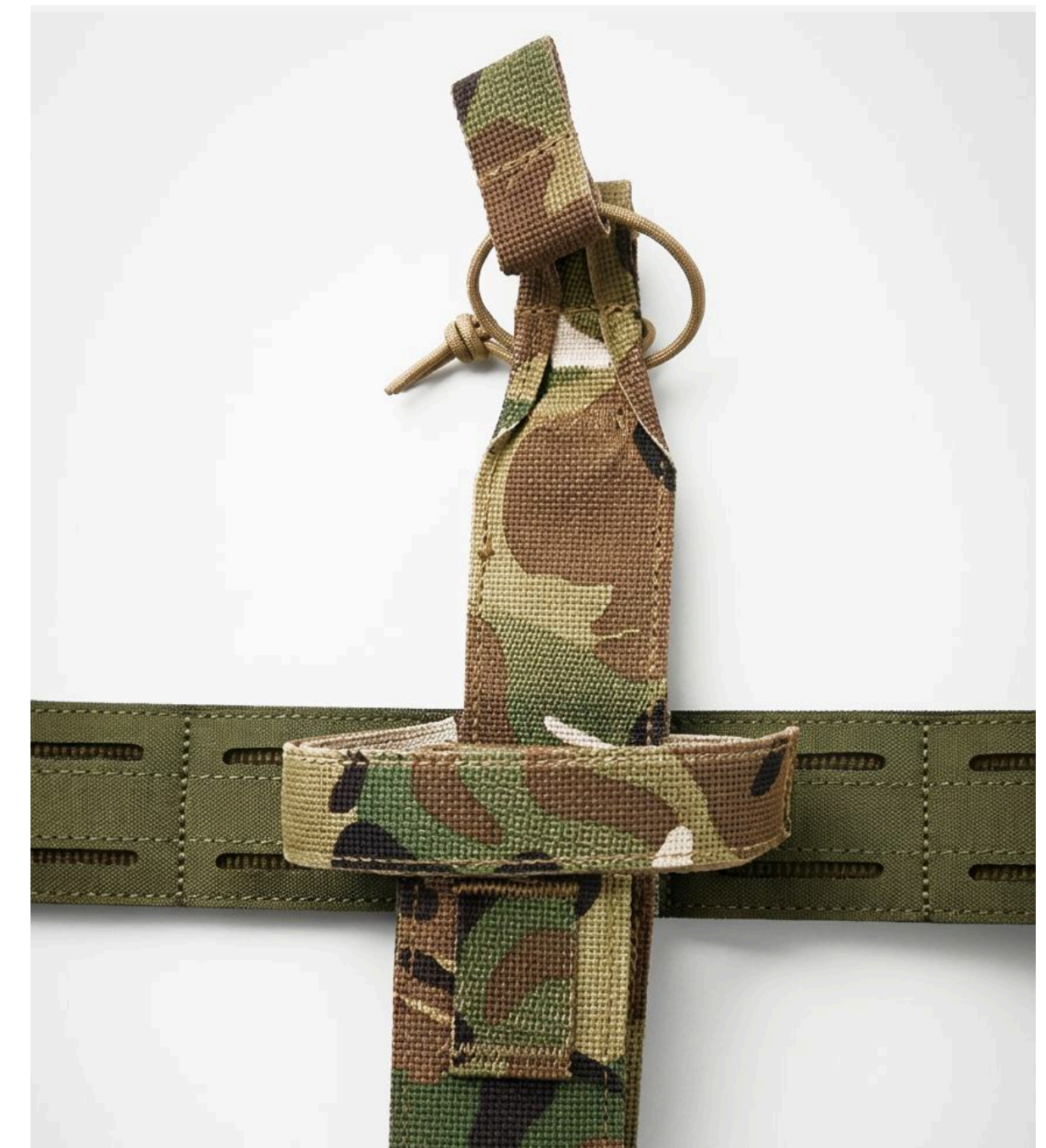


BUCKLE



FEATURES

1. Laser cut molle structure provides multiple applications
2. Dual layer design provides substantial stability,
detachable inner belt
3. Zinc alloy buckle





FEATURES

- 1. Dual layer molle structure in cordura, one-piece weaving
- 2. Able to attach bags, gear etc.
- 3. Zinc alloy buckle





FEATURES

- 1. Dual layer molle structure in cordura, one-piece weaving
- 2. Zinc alloy buckle



WEBBING



BUCKLE

Small changes, Big difference

FAIRYLAND (SHANGHAI) NEW
MATERIAL TECHNOLOGY COMPANY LIMITED

2ND FLOOR, BLOCK A, NO.260 YUAN TAI ROAD,
BAOSHAN DISTRICT, SHANGHAI, CHINA. ZIP CODE: 200444

UNIVERSAL HARDWARE
COMPANY LIMITED

ROOM 2610, APEC PLAZA, 49 HOI YUEN ROAD,
KWUN TONG, HONG KONG

UNIVERSAL HARDWARE (VIETNAM)
COMPANY LIMITED

3RD FLOOR, NO.1 VSIP II-A, ROAD 32, TAN BINH TOWN,
BAC UYEN DISTRICT, BINH DUONG PROVINCE, VIETNAM