



# CASUAL BELT SERIES

# ABOUT US

Fairyland Group is one of the global recognized product research and development enterprises specializing in the innovation, production, and distribution of premium hardware components and advanced webbing, belts and suspenders solutions.

Our core offerings encompass premium hardware accessories — including precision-crafted buckles, clasps and fasteners — as well as advanced webbing products designed for applications in fashion, outdoor gear, automotive manufacturing, luggage, and industrial equipment.

Our vertically integrated supply chain and state-of-the-art facilities ensure seamless customization, rapid prototyping, and scalable production to meet the evolving needs of clients worldwide. By fostering collaborative partnerships and maintaining a customer-first ethos, Fairyland Group empowers brands to achieve competitive differentiation. With a global network of subsidiaries and a forward-thinking team, we continue to redefine industry benchmarks while supporting clients at every stage of their growth journey.

## Discover how Fairyland's innovative spirit and technical prowess can transform your next project!

# CONTENTS

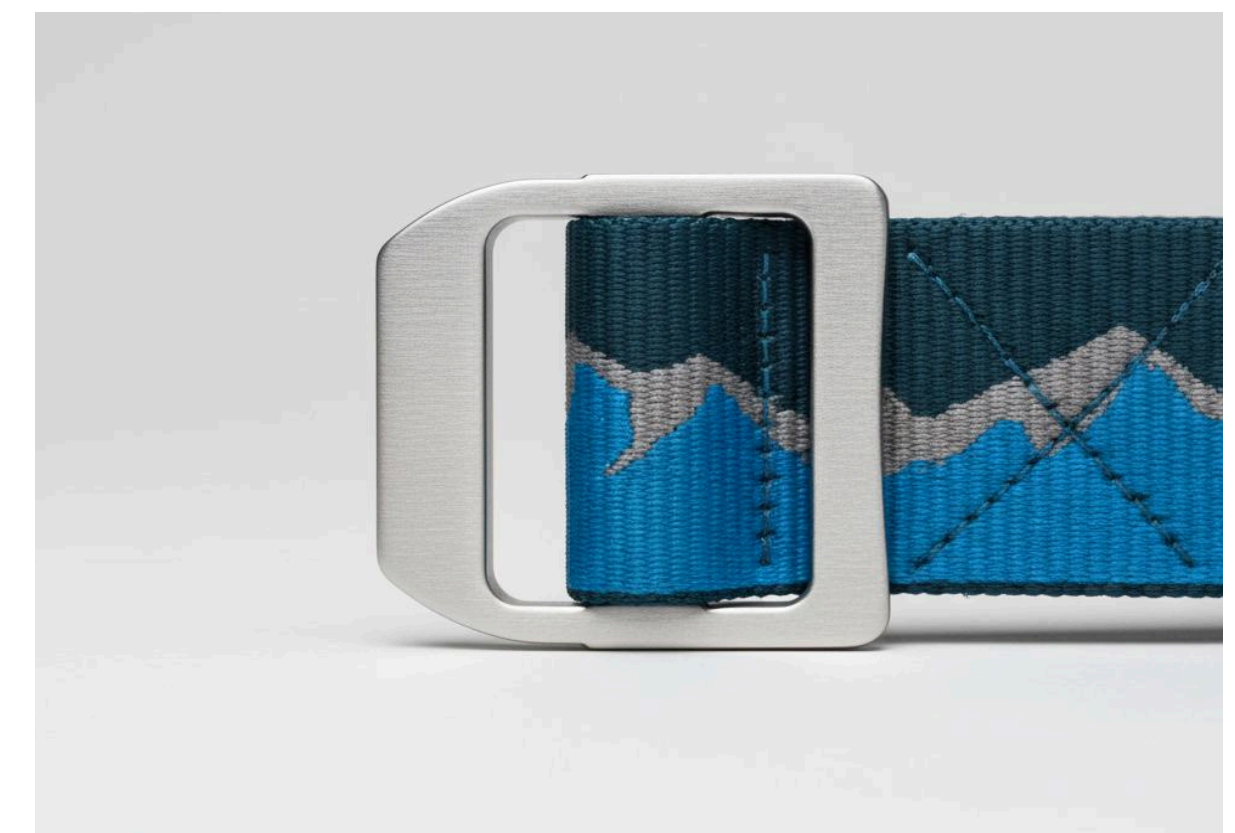
JACQUARD SERIES	04	WALLET SERIES	15
MOLLE SERIES	07	TWILL SERIES	16
MAGNETIC BUCKLE SERIES	08	NYLON 66 SERIES	17
ELASTICITY SERIES	09	SKIN FRIENDLY SERIES	18
WEAVE SERIES	10	SKY SERIES	20
QUICK RELEASE SERIES	12	TEXTURE SERIES	21
ALUMINUM BUCKLE SERIES	13	SNOWFLAKE SERIES	23
ZINC ALLOY BUCKLE SERIES	14	CATION SERIES	24



# JACQUARD SERIES

## FEATURES

1. Jacquard webbing with high resolution pattern
2. Buckles in aluminum





# JACQUARD SERIES

## FEATURES

1. High definition embroidery webbing
2. Quick release plastic buckle

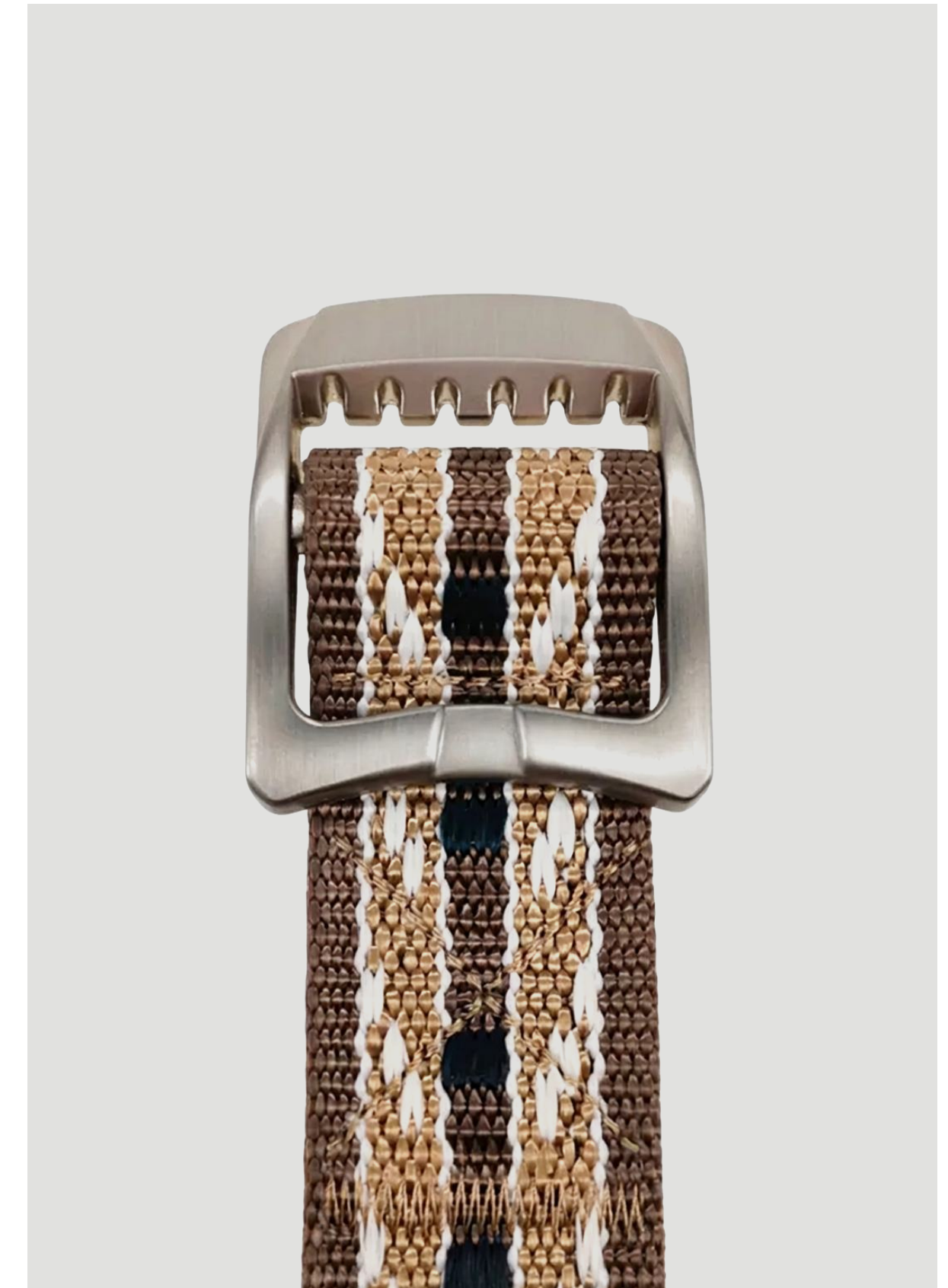




# JACQUARD SERIES

## FEATURES

1. Jacquard webbing with high resolution pattern
2. Zinc alloy buckle
3. Continuous connections with the same type of belt

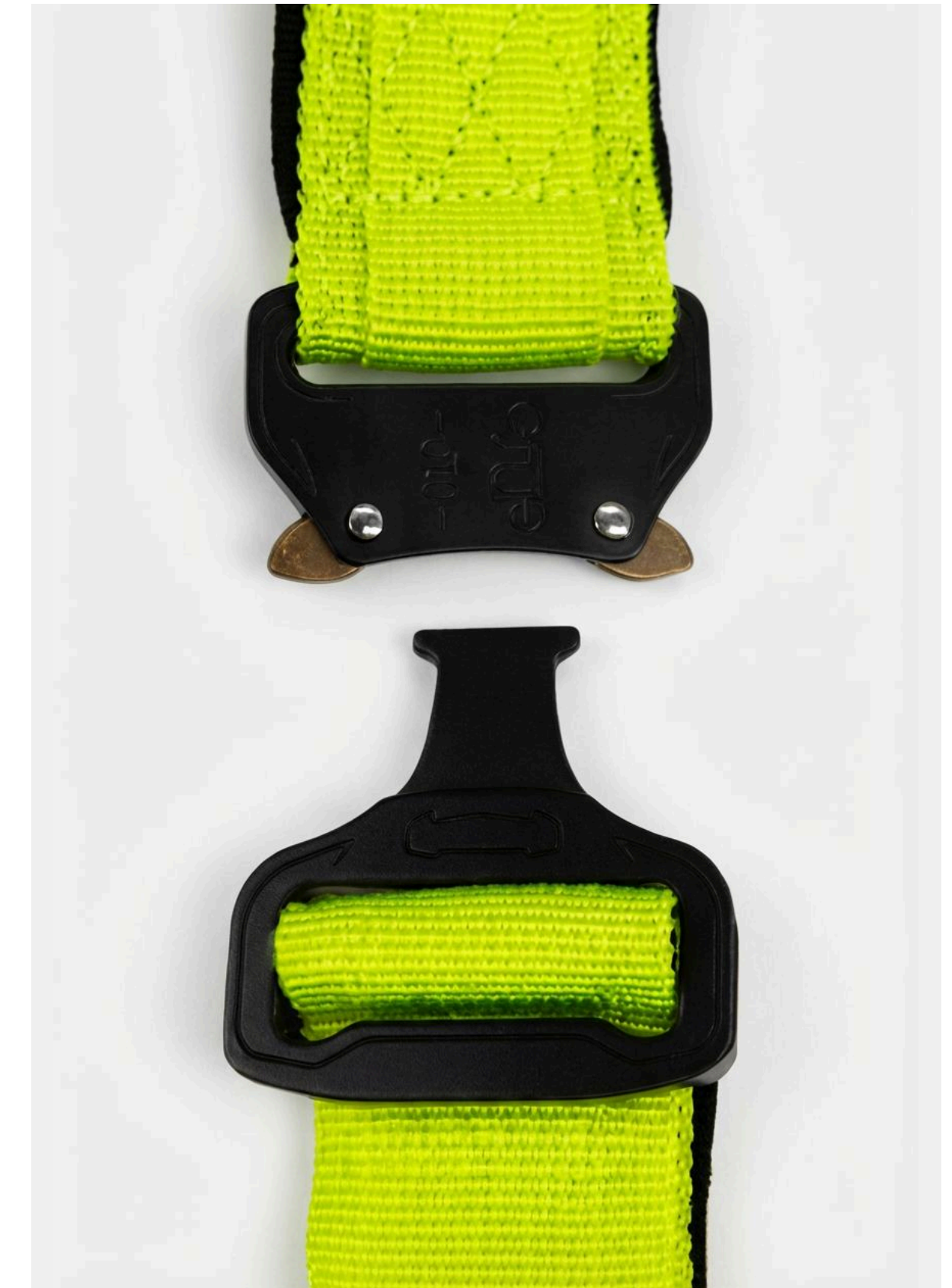




# MOLLE SERIES

## FEATURES

1. Dual-layer intergrated webbing with open edge, produced by special technical process
2. Molle structure, able to attach bags, gear etc, hand releasing
3. Cobra buckle in both aluminum and zinc alloy

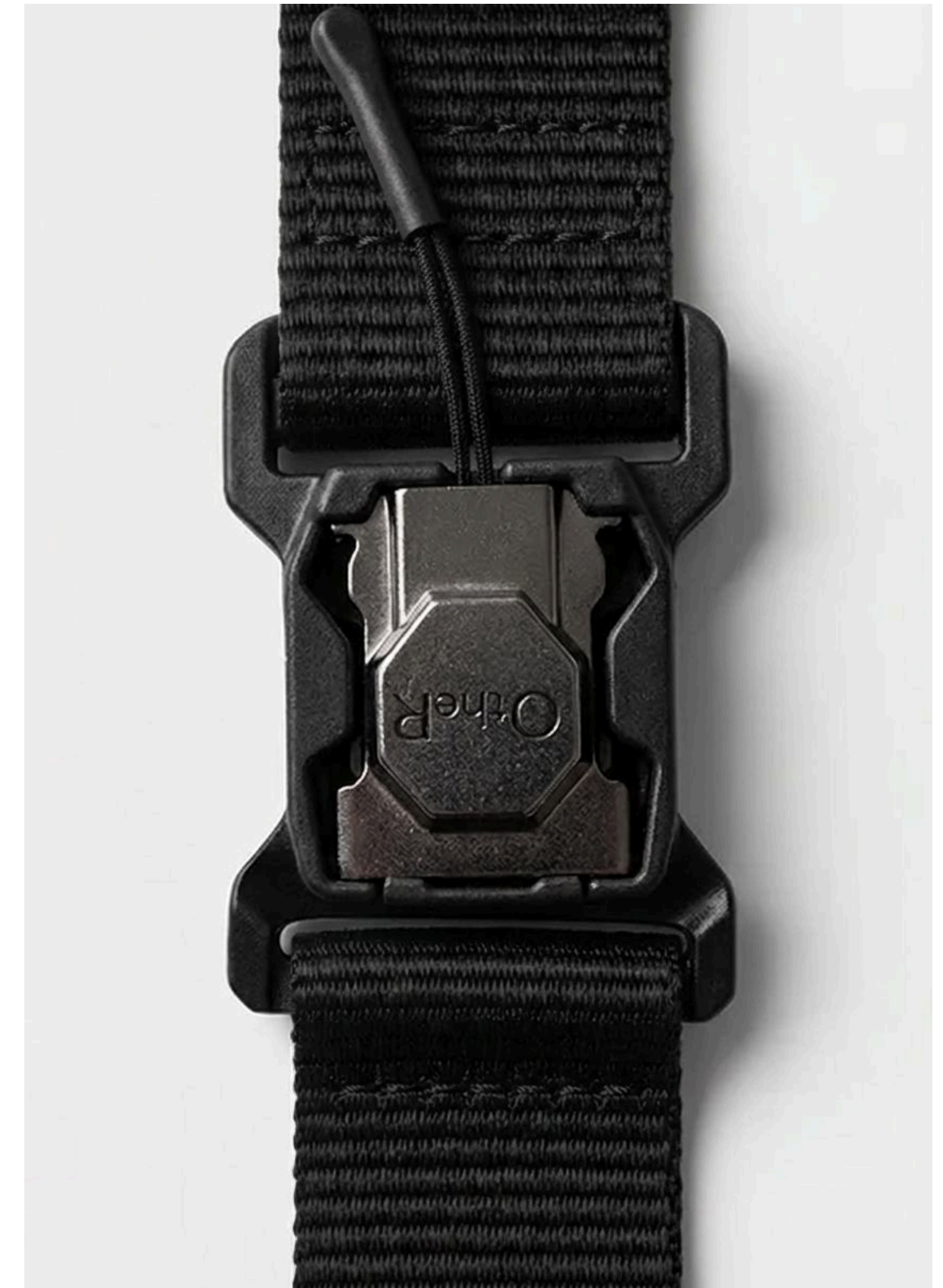
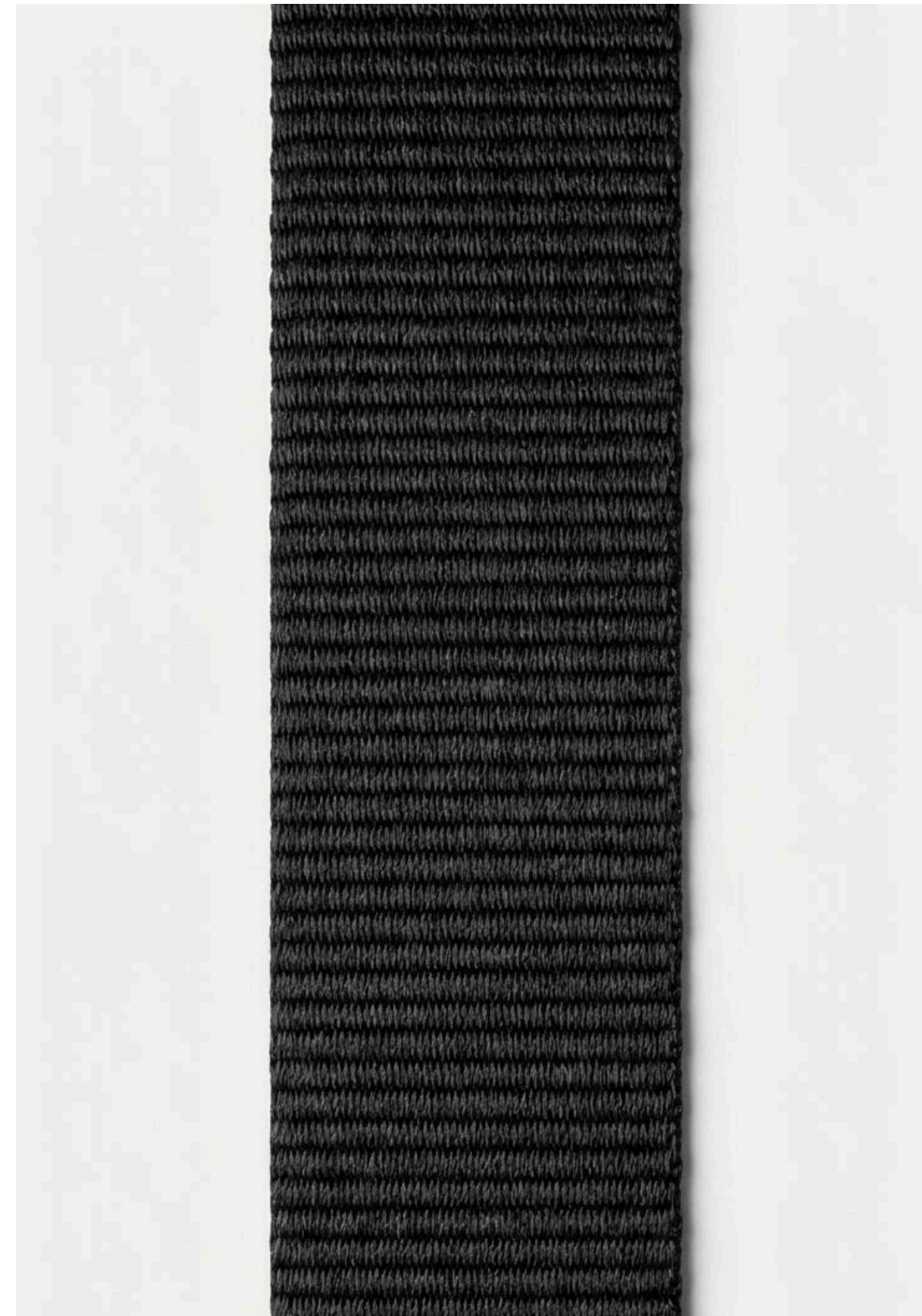




# MAGNETIC BUCKLE SERIES

## FEATURES

1. Elastic webbing offers great flexibility
2. Quick release and locking magnetic mechanism





# ELASTICITY SERIES

## FEATURES

1. Cobra buckle available in zinc alloy and aluminum, elegant appearance and easy operation
2. Elastic webbing offers great flexibility
3. Continuous connections with the same type of belt





# WEAVE SERIES

## FEATURES

1. Zinc alloy prong, no punch hole, stick the prong into the webbing at any place
2. Elastic webbing offers great flexibility





# WEAVE SERIES

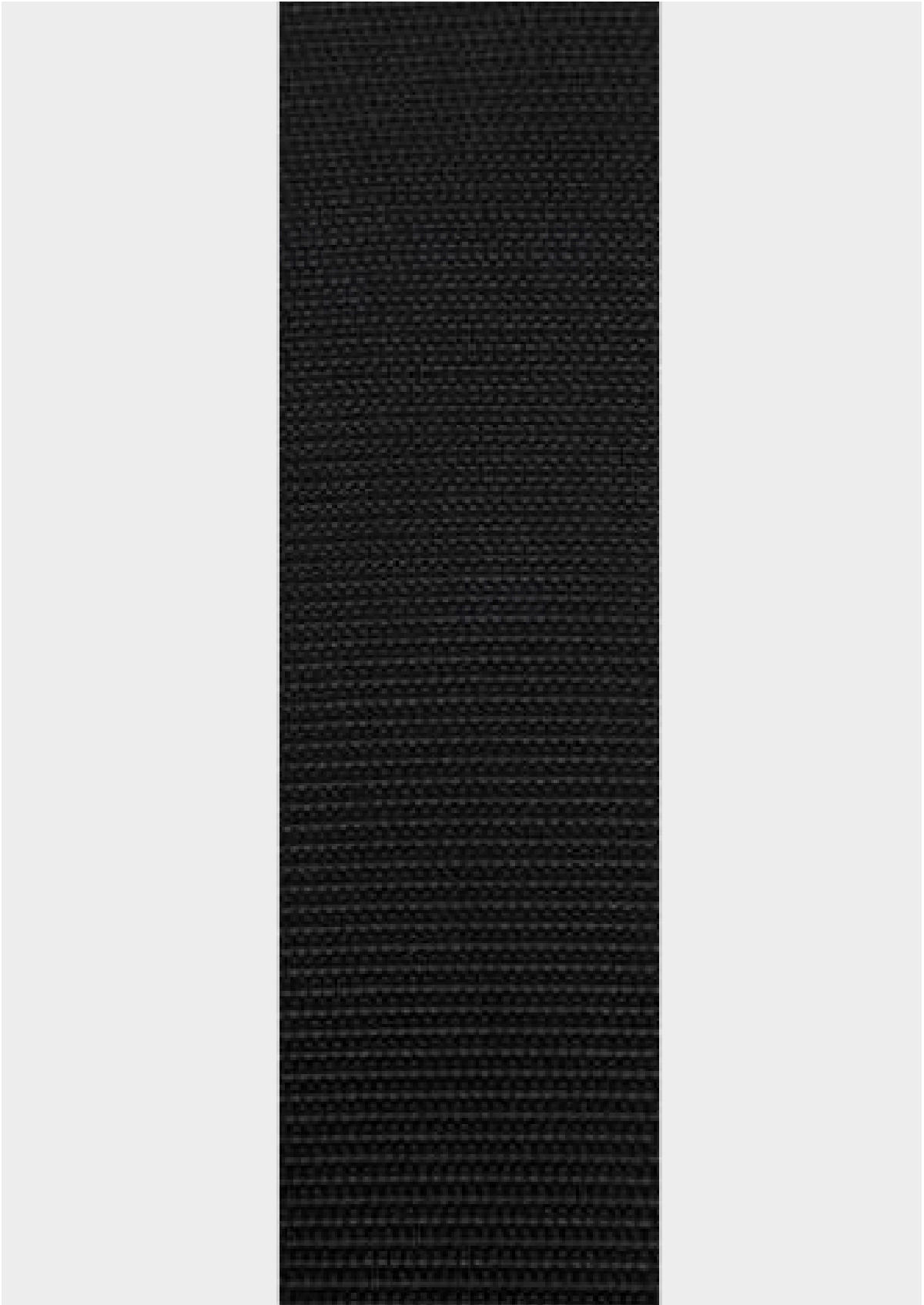
## FEATURES

1. Zinc alloy prong, no punch hole, stick the prong into the webbing at any place
2. Elastic webbing offers great flexibility





# QUICK RELEASE SERIES





# ALUMINUM BUCKLE SERIES

## FEATURES

Adjustable aluminum buckle for continuous connections with the same type of belt





# ZINC ALLOY BUCKLE SERIES

## FEATURES

Adjustable aluminum buckle for continuous connections with the same type of belt





# WALLET SERIES

## FEATURES

- 1. Lightweight POM plastic buckle
- 2. Wallet structure with zipper





# TWILL SERIES





# NYLON 66 SERIES

## FEATURES

1. Webbing in nylon 66 features satiny appearance and comfortable to the touch
2. Single hand adjustable belt with movable zinc alloy buckle structure





# SKIN FRIENDLY SERIES

## FEATURES

- 1. Skin-friendly webbing is comfortable to the touch
- 2. Elastic webbing with better flexibility
- 3. Super lightweight UTX buckle

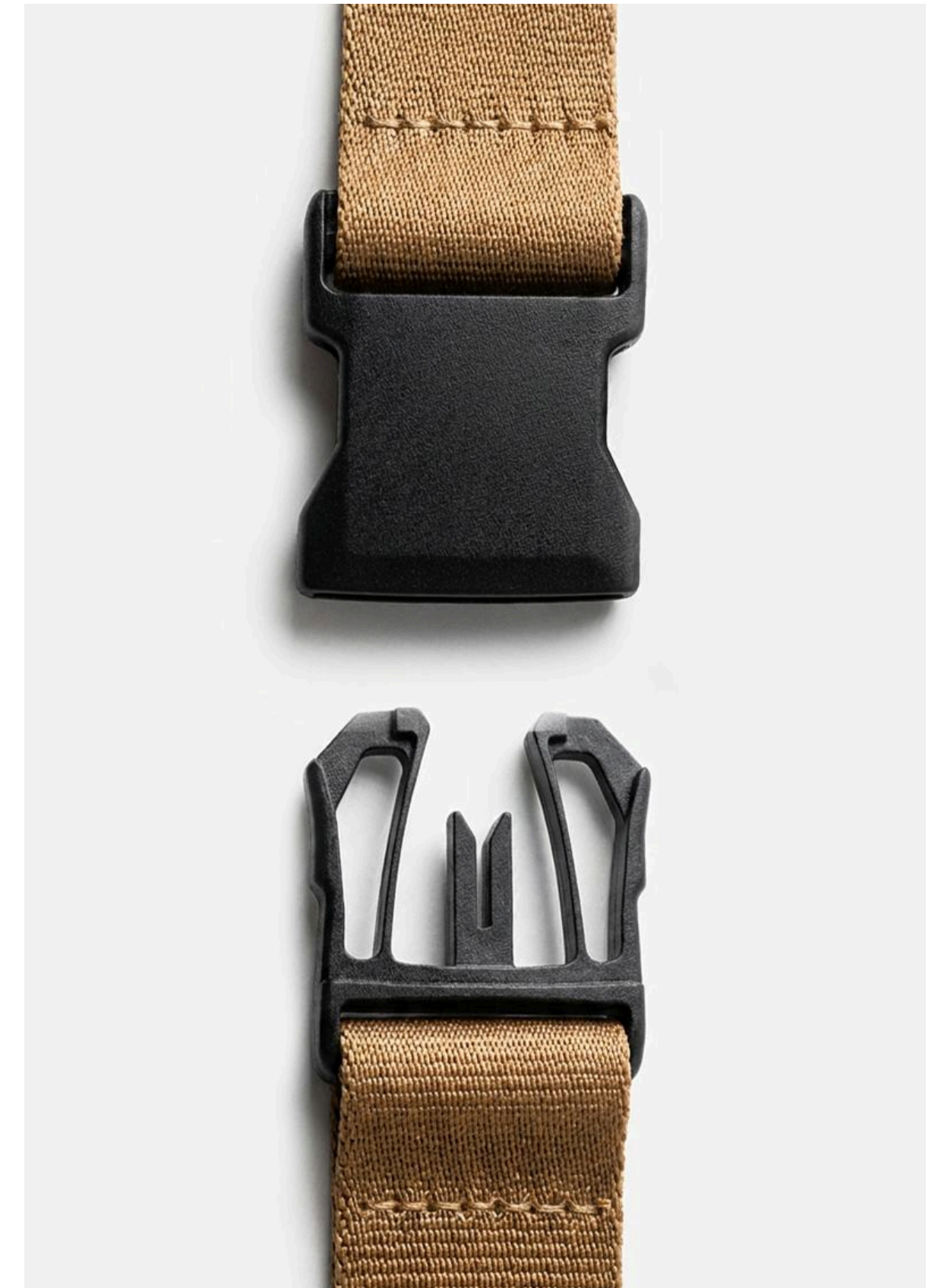




# SKIN FRIENDLY SERIES

## FEATURES

1. Skin-friendly webbing is comfortable to the touch
2. Elastic webbing with better flexibility
3. Super lightweight UTX buckle





# SKY SERIES

## FEATURES

Single-handed zinc alloy adjustable buckle

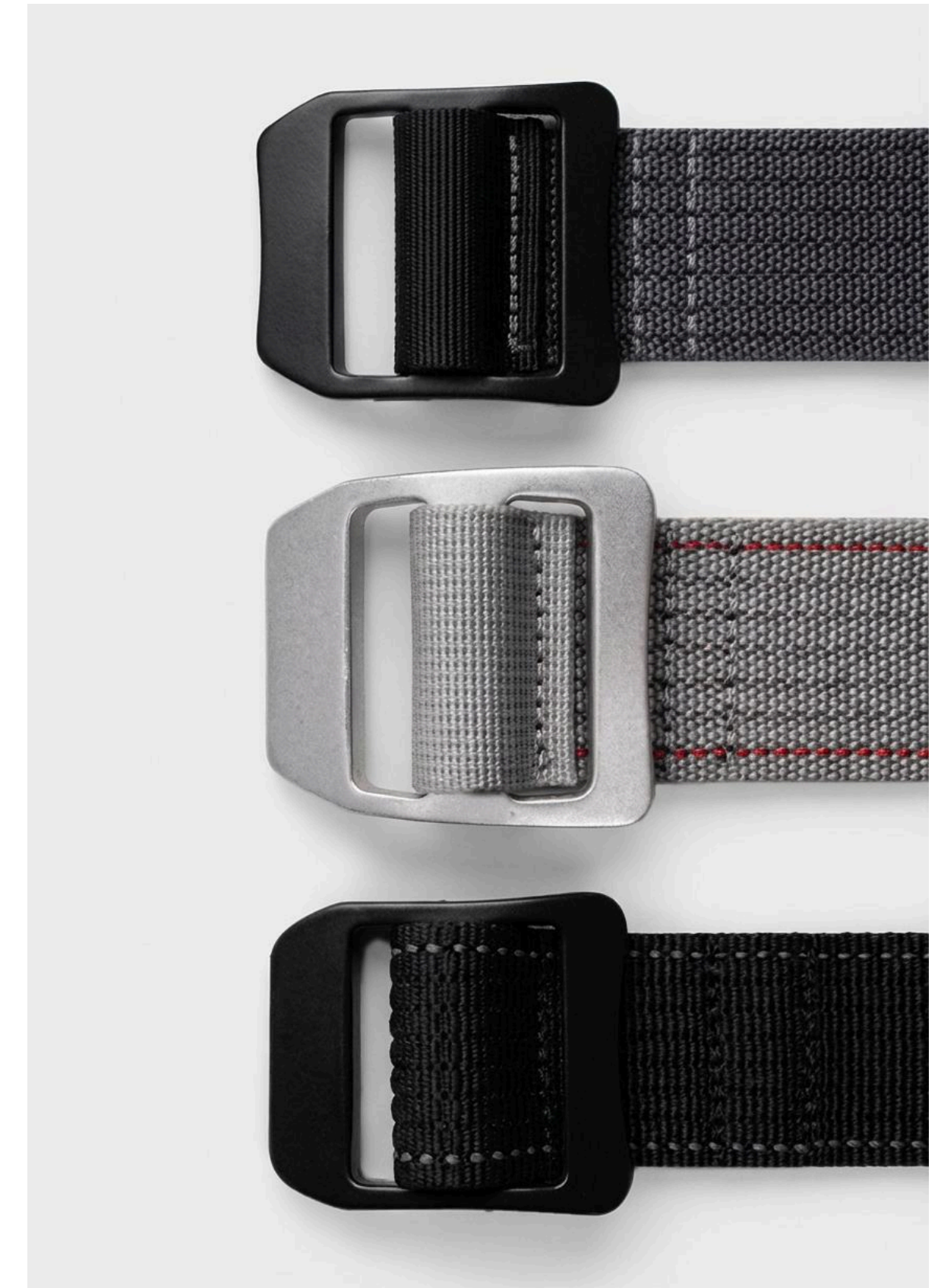




# TEXTURE SERIES

## FEATURES

1. Light aluminum buckle
2. Continuous connections with the same type of belt

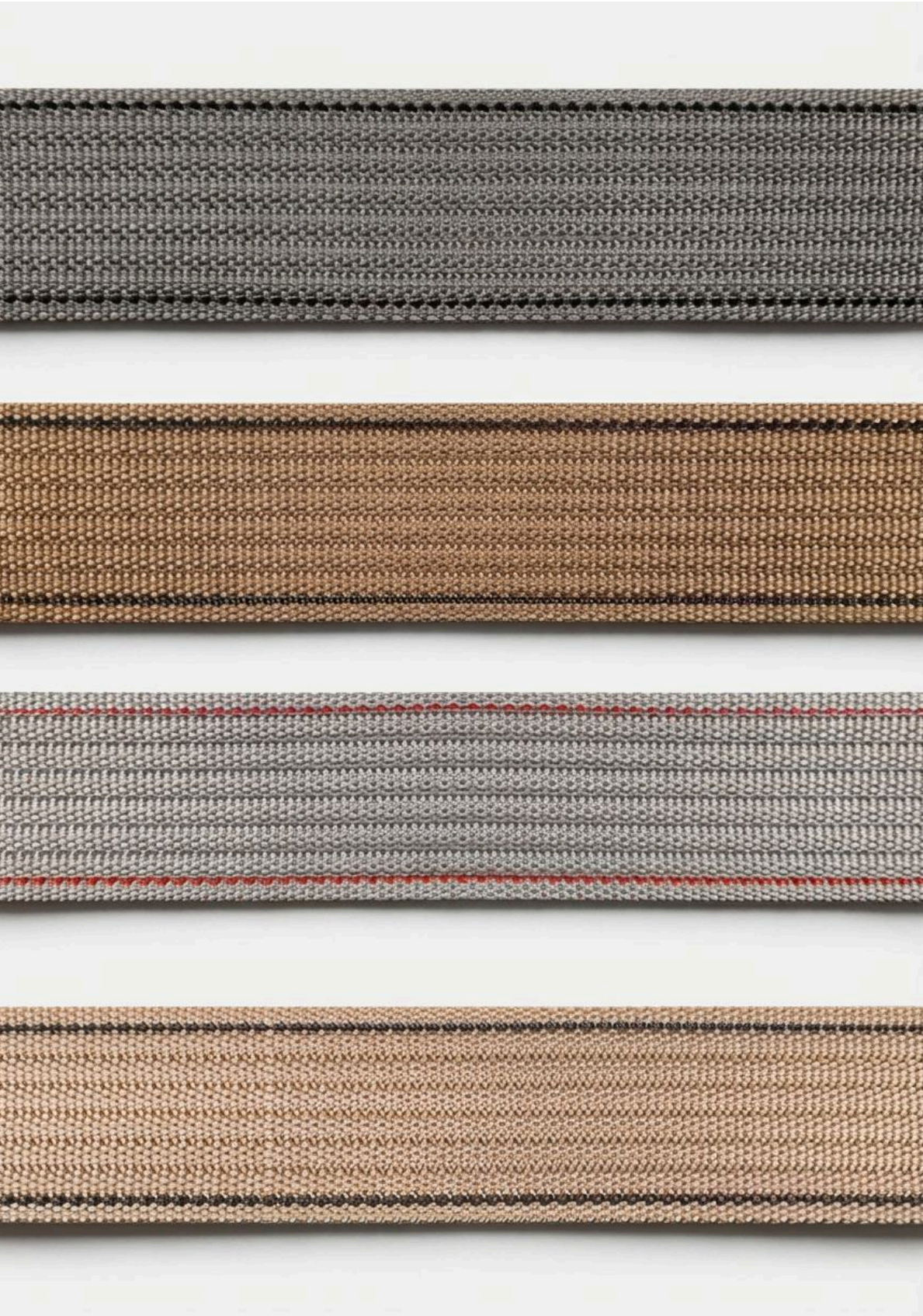




# TEXTURE SERIES

## FEATURES

Single-handed zinc alloy adjustable buckle





# SNOWFLAKE SERIES

## FEATURES

- 1. Zin alloy press buckle
- 2. Contrasting colors resemble a snowflake

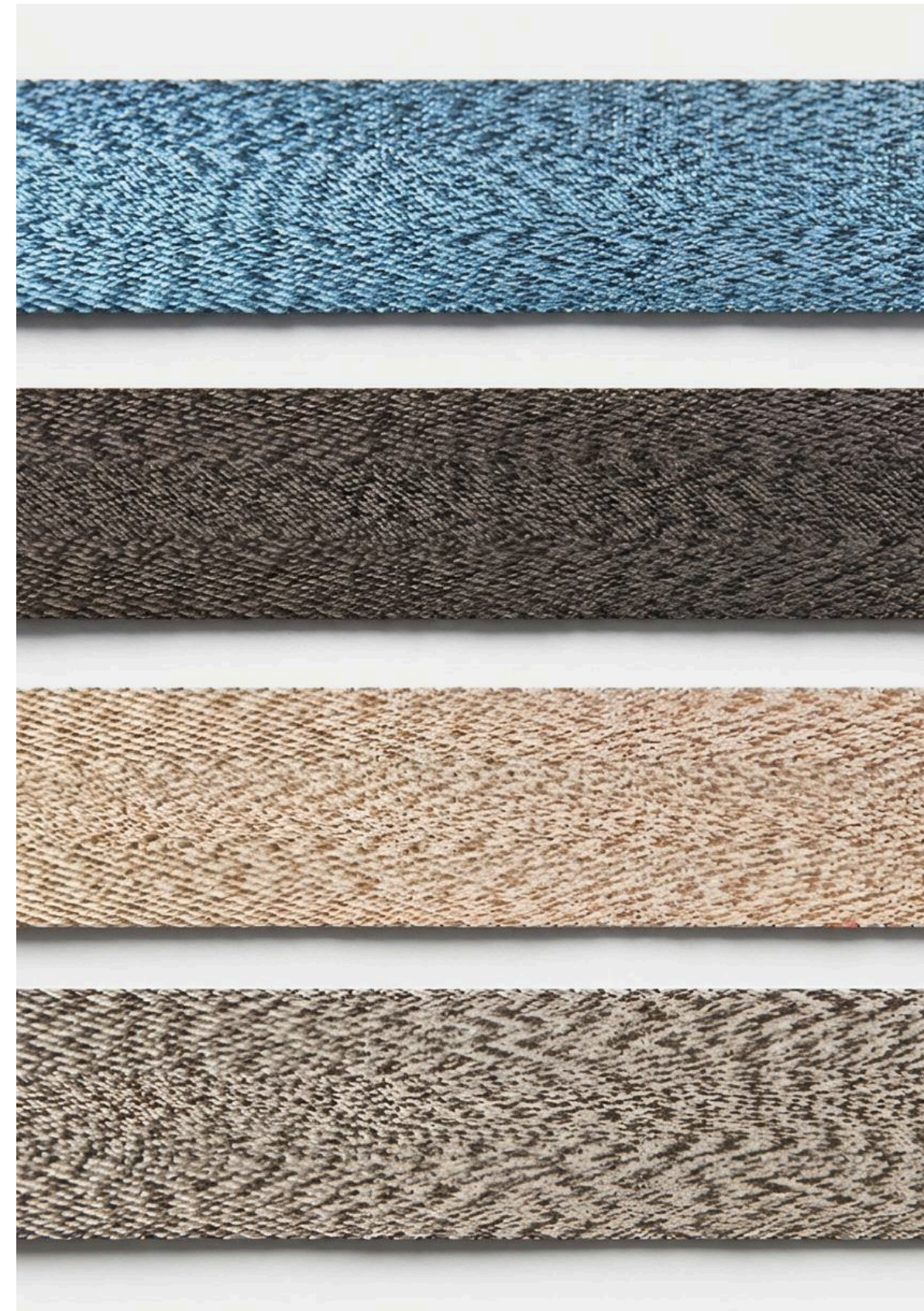




# CATION SERIES

## FEATURES

1. Cation series offers an elegant, natural appearance
2. Lightweight aluminum buckle





# Small changes, Big difference

FAIRYLAND (SHANGHAI) NEW  
MATERIAL TECHNOLOGY COMPANY LIMITED

2ND FLOOR, BLOCK A, NO.260 YUAN TAI ROAD,  
BAOSHAN DISTRICT, SHANGHAI, CHINA. ZIP CODE: 200444

UNIVERSAL HARDWARE  
COMPANY LIMITED

ROOM 2610, APEC PLAZA, 49 HOI YUEN ROAD,  
KWUN TONG, HONG KONG

UNIVERSAL HARDWARE (VIETNAM)  
COMPANY LIMITED

3RD FLOOR, NO.1 VSIP II-A, ROAD 32, TAN BINH TOWN,  
BAC UYEN DISTRICT, BINH DUONG PROVINCE, VIETNAM